



RICE GROWING OUTLOOK REPORT

September 2024





Rice Growing Outlook Report

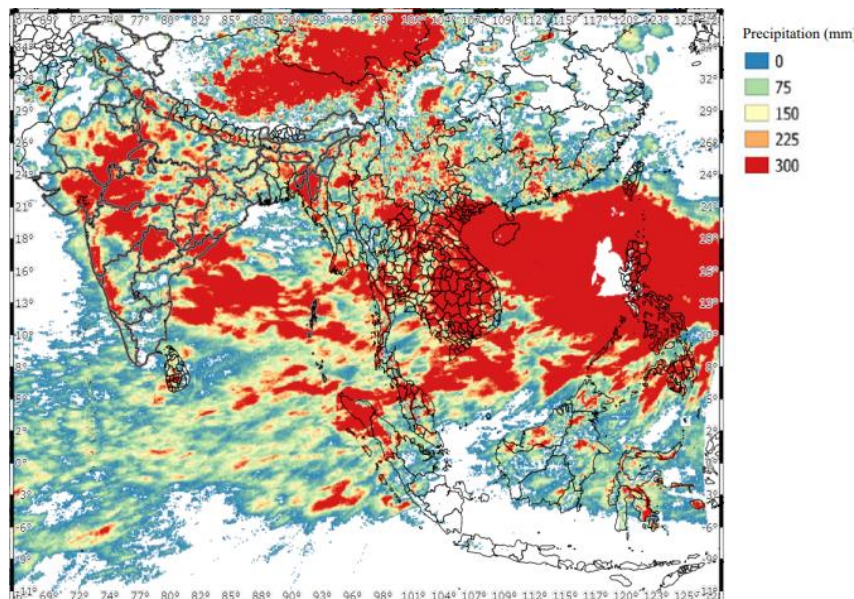
September, 2024

Overview

In the Northern side of SE-Asia, the wet season rice is in growing stage to harvesting stage. Super Typhoon Yagi made landfall in northern Vietnam on September 7th and continued to bring heavy rains for a long period of time. This heavy rain caused flood damage in Vietnam, Laos, Thailand, Cambodia and Myanmar. The general growing condition of wet season rice is fair to lightly poor due to these disasters have expanded. On the other hand, the harvested yield of early rice is generally good.

In the Southern side of SE-Asia, the dry season rice is in harvesting stage mainly. Total cultivated area is higher than the last dry season. The growing condition is generally good under rainfall in late August to early September. In Malaysia, wet season rice planting has begun under good weather condition and Brunei is in land preparation.

Precipitation condition in early September



This map is provided by Indian Space Research Organisation (ISRO) under the APRSAF/SAFE agromet project

<https://www.eorc.jaxa.jp/SAFE/project/agromet>

Brunei

About 60% of the dry season rice has been harvested with the remaining areas close to harvesting stage. Harvest has been slightly better with the new hybrid variety in comparison to previous varieties, even though some damage has been caused due to pest attacks. Precipitation remains higher than normal and surface temperatures are lowering. Current outlook for the dry season is slightly poor.

Brunei has also entered the wet season period, and the land preparation of wet season rice is has begun.

Cambodia

Wet season rice planting has completed on 2.8 million ha, which is 107% of the national plan. The severe rains caused flooding in some provinces and damaged rice fields. The flood damaged regions have been affected by drought in reversal due to lack of rainfall with the drought affected area accounting for 0.12% of the total planted area. While, 34% of early rice was harvested and the production is projected to be lower than last year due to the flood and drought.

Indonesia

The planting of dry-season rice has almost completed. The total area is 4.7 million hectares which is 8.0% higher than the last dry season. The growing condition is generally good under rainfall in late August to early September, especially in the southern region.

This September is also the third month of the dry season rice harvest. The total harvested area is 2.7 million hectares, 6.2% higher than last year. The yield is forecasted to be fair.

Although it is still the dry season, there was an increase in rainfall intensity in some areas in early September, but no significant damage was reported.

Laos

The wet season rice of the lowland is in the young panicle forming stage to grain filling stage. The weather condition and irrigation water supply in this season is generally good for the paddy field due to enough natural water. But some paddy area near with the Mekong River now is affecting by flood and land landslide due to heavy rain fall from the second half of last August until now, and the affecting and damage areas are under investigation.

The upland rice is also under good growing conditions. Some small areas in the North are affected by pest outbreaks but the impact on rice area is small and the damage is not serious.

Malaysia

The planted area of wet season rice in September is approximately 9% of the cultivation plan areas. These cultivation areas are mostly carried out in central region and some southern region.

The overall condition of early wet season rice is in satisfactory to favorable condition. The other some areas especially in the granaries are in the process of land preparation and waiting for the right time to start planting.

Myanmar

In this month, planting of the wet season rice has almost completed with 5.5 million hectares accounting 91.3% of the national plan. The monsoon rain favored the planting work of the wet season rice. The planting progress is similar to last year.

The monsoon floods caused in wide areas of Myanmar due to the impact of Typhoon Yagi. It is reported that over 480 thousand hectares of the planted areas have been affected by the floods and almost 200 thousand hectares has been damaged. Replanting has been operated for about half of those damaged fields. Overall growing condition is good due to enough monsoon rain, and most of the planted wet season rice is now at panicle formation stage to maturity stage.

Philippines

Rice planted in April to May was fully harvested. Production is lower compared to the same period last year due to insufficient amount of rainfall. Wet season rice planted in July to August is in the tillering to panicle forming stage. Low pressure area, tropical cyclone and southwest monsoon rains continue to affect the whole country especially the Luzon and Visayas provinces.

For now, the crop growing condition of wet season rice is fair to slightly poor due to lodging and pest damage during growing stage.

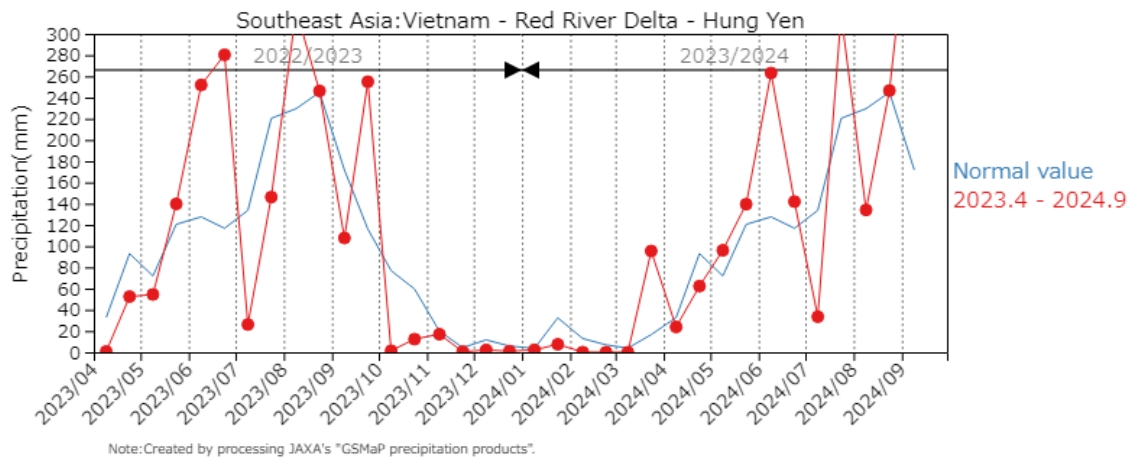
Thailand

Wet season rice is in young panicle forming stage. In July - August, the monsoon and the tropical disturbances caused flooding. The widespread flood situation extended to the Northern, Northeastern and Central regions. It is reported that about 120 thousand hectares or 1.2% of planted areas have been affected and the damaged area is in the process of assessment. On the other hand, the growing conditions in most areas are good. The yield and total production are expected to increase.

Vietnam

In the North, the wet season rice is in the young panicle forming to grain filling stages. Super Typhoon Yagi made landfall in northern Vietnam on September 7th and continued to bring heavy rains for a long period of time. The yield is forecast to be lower than last season due to the impact of storms and floods. It is estimated that about 200 thousand hectares of planted areas have been affected by the storms and floods.

In the South, the summer autumn rice is in the harvesting stage. The yield of rice is about 5.94 tons per hectare with the same as last year. In addition, the other wet season rice (autumn winter rice and seasonal rice) is in the growing stages under good growing conditions.



JASMAI Hung Yen precipitation graph: Super Typhoon Yagi made landfall in northern Vietnam on September 7th

*JASMAI is an open and free system

<https://jasmai.maff.go.jp/en/>